



Optimize Your Heterogeneous SOA Infrastructure

SHARE Boston 2010

Walter Falk

IBM, Executive Director
Cloud Business Development

wfalk@us.ibm.com

Smart
SOA

The world is getting smarter – more instrumented, interconnected, intelligent.



Smart
traffic
systems



Intelligent
oil field
technologies



Smart food
systems



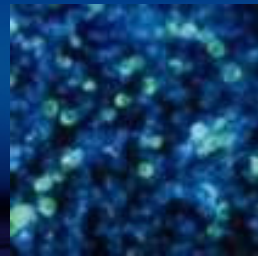
Smart
healthcare



Smart energy
grids



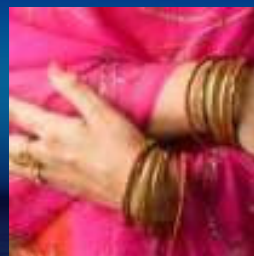
Smart retail



Smart water
mgmt



Smart supply
chains



Smart
countries



Smart
weather



Smart
regions

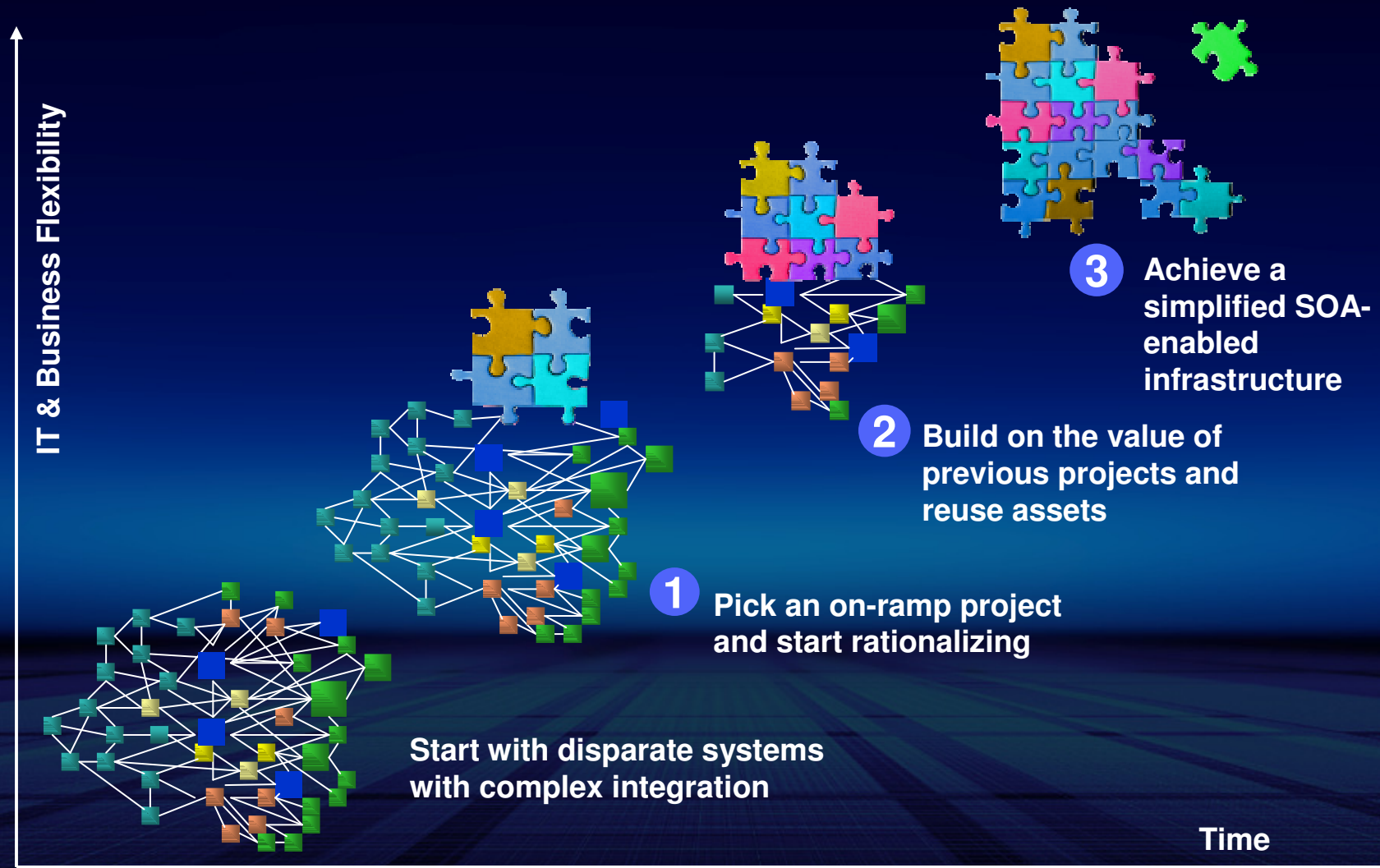


Smart cities

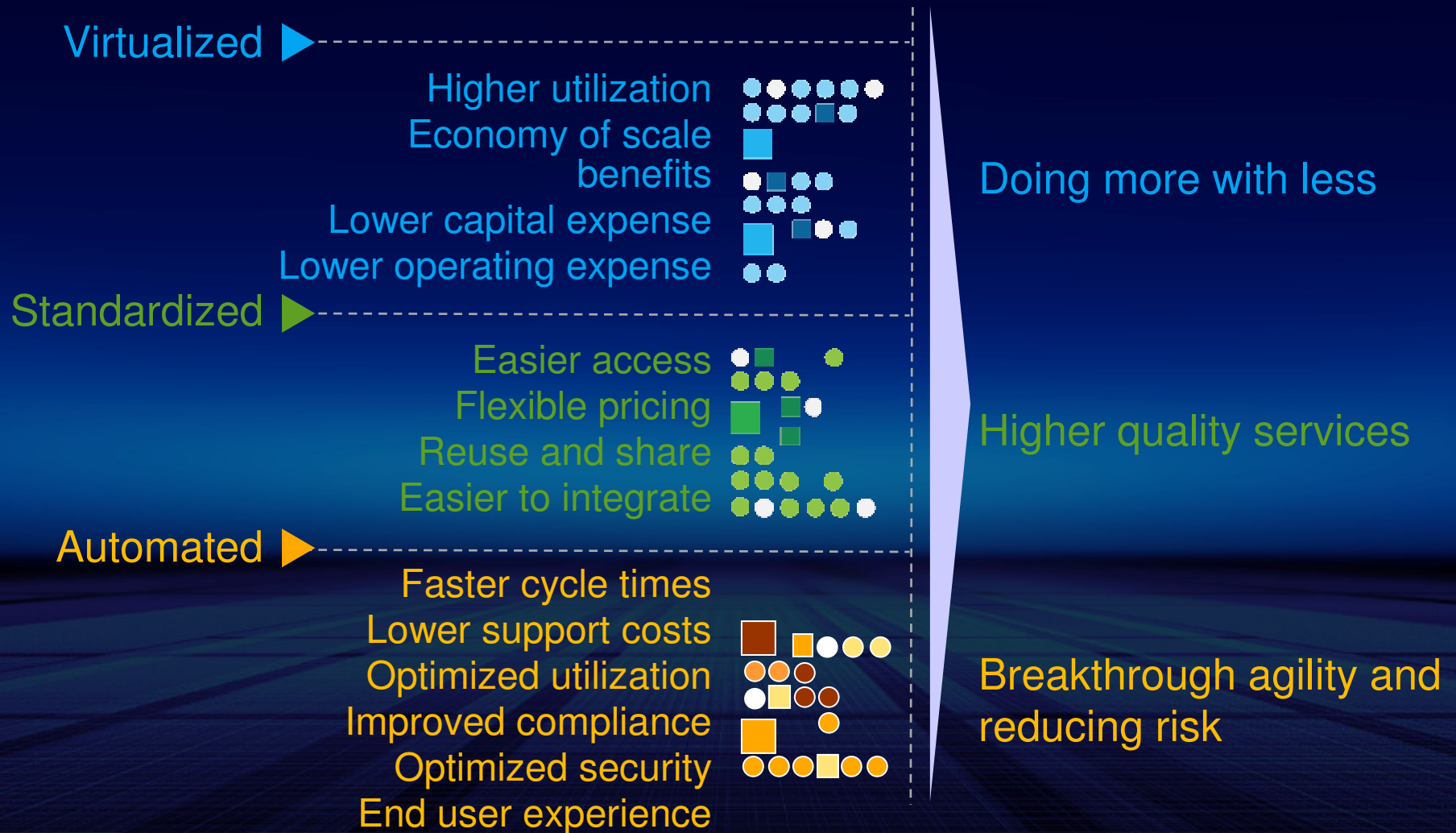
SOA was designed to enable these innovations

Adopting SOA is a Progressive Transformation of Applications, Processes and IT infrastructure

It is also a roadmap towards Cloud Computing.....

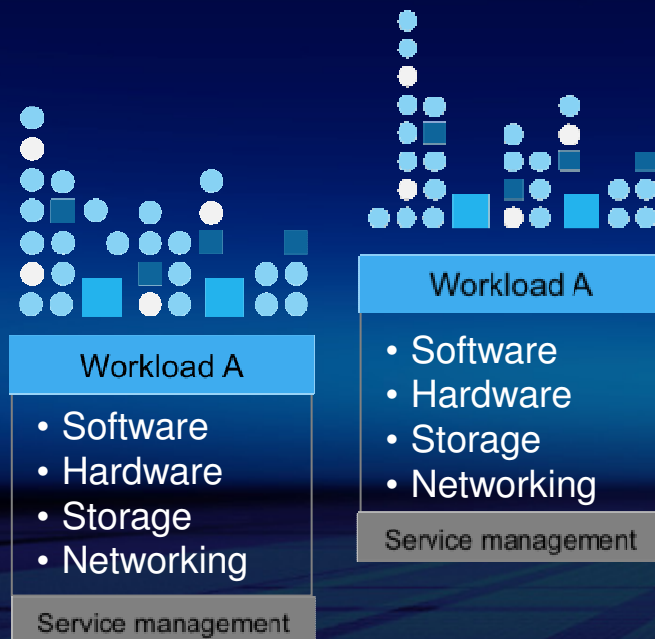


Cloud computing delivers IT and business benefits....beyond just agile applications based on SOA

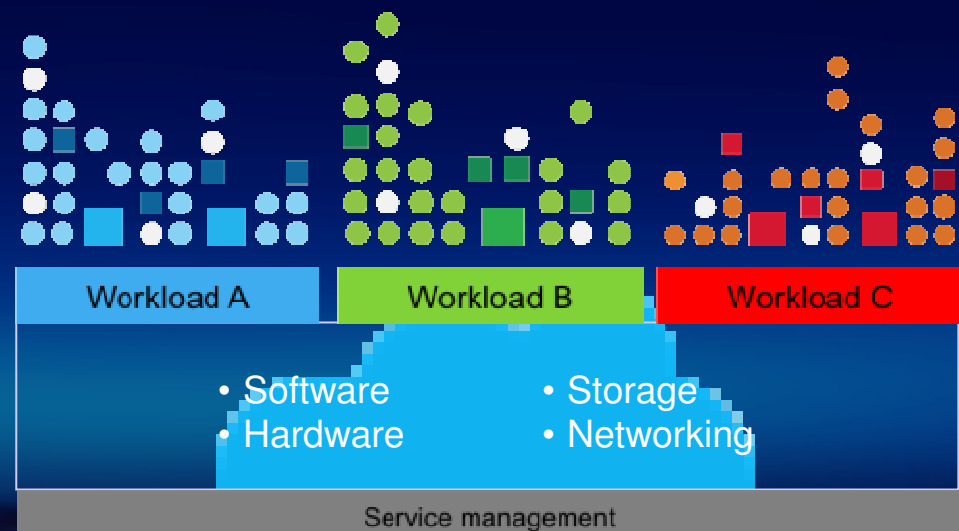


Cloud Computing is the optimized infrastructure that makes SOA services even more efficient

Without cloud computing

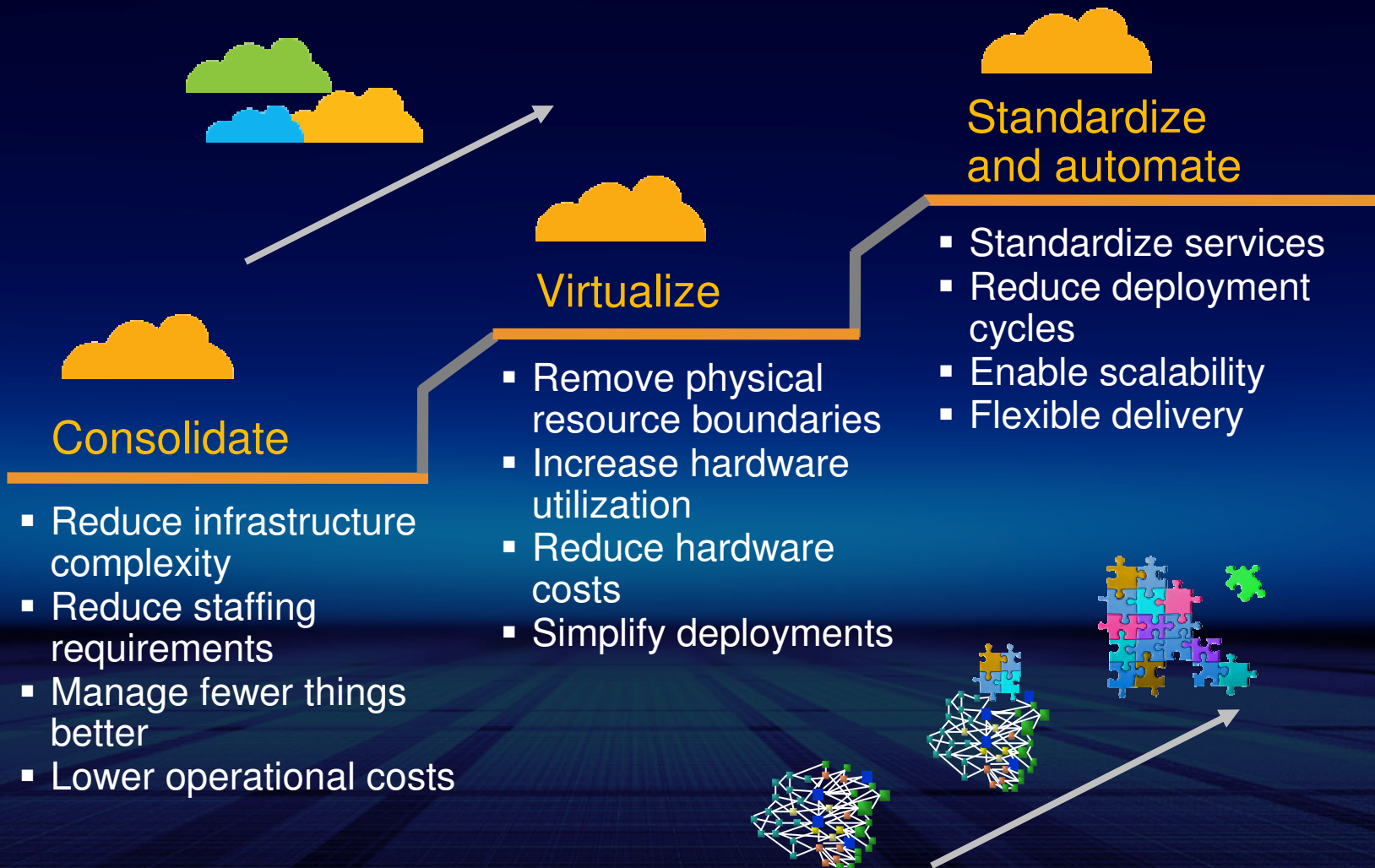


With cloud computing



- Virtualized resources
- Automated service management
- Standardized services
- Location independent
- Rapid scalability
- Self-service

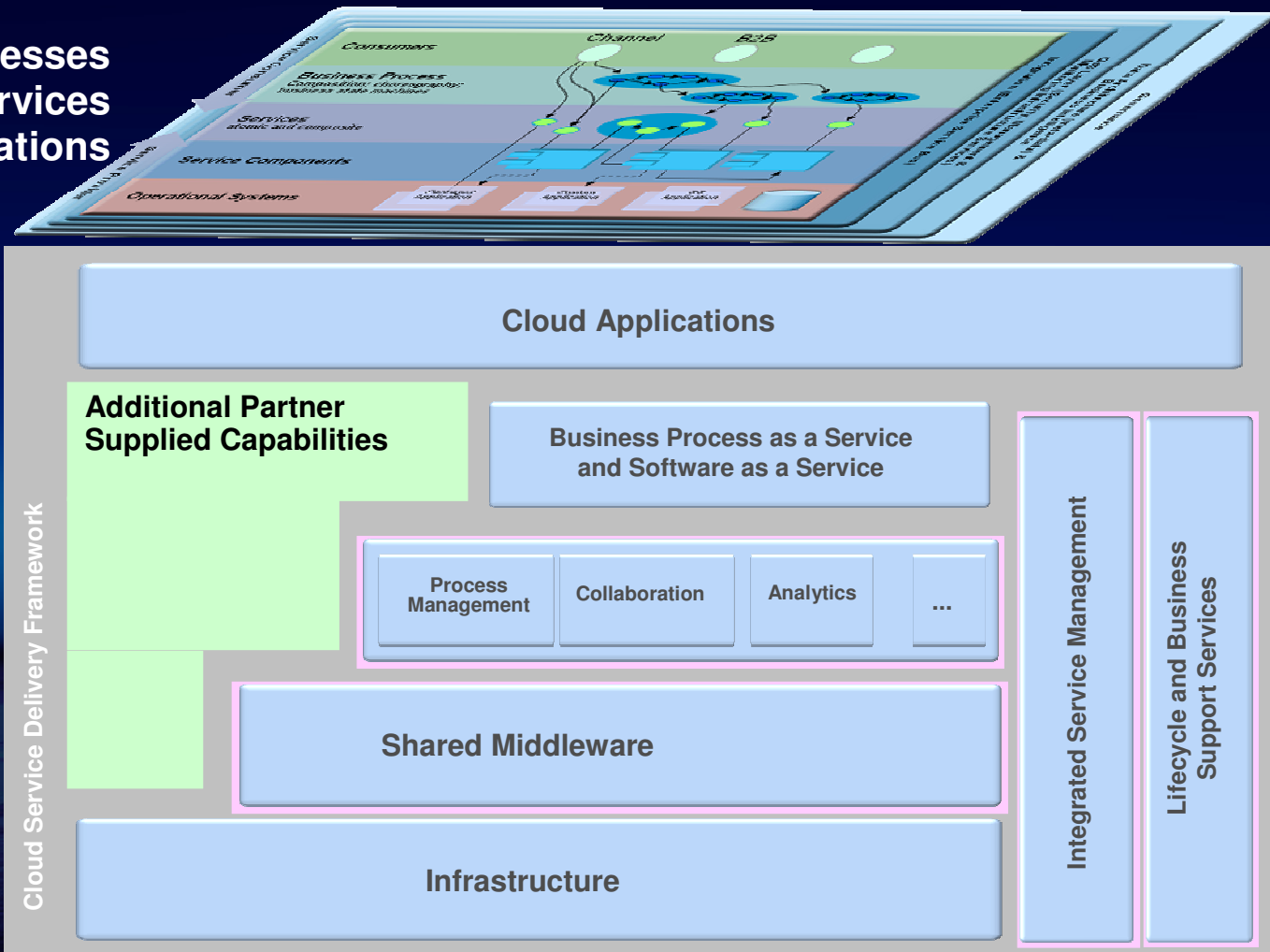
Roadmap towards Cloud Computing rely on good SOA practices to realize its full potential



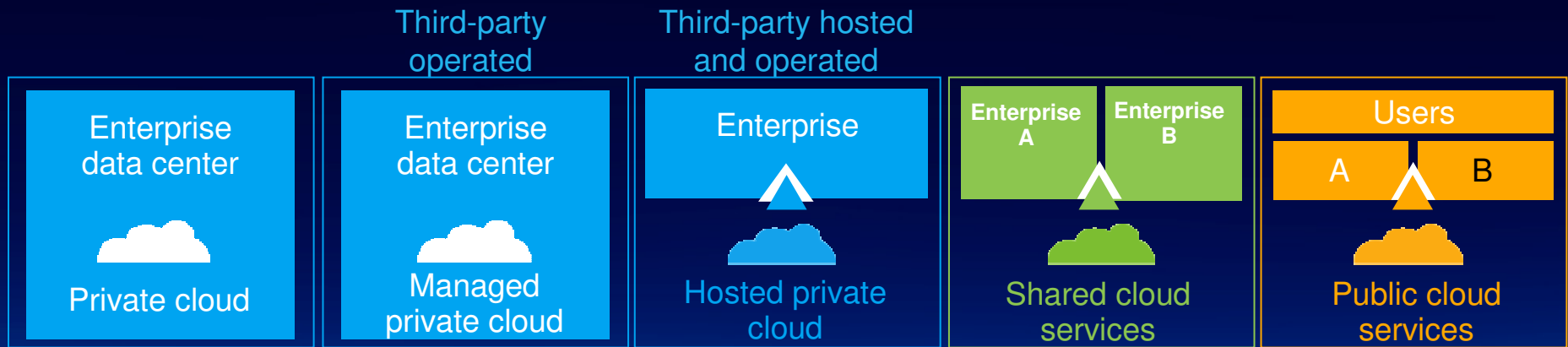
SOA and Cloud Computing

Cloud Services Delivery Framework is rapidly becoming available as the preferred way to host SOA based applications

SOA Processes
SOA Services
SOA Applications



There is a spectrum of deployment options for cloud computing....all of them supporting SOA



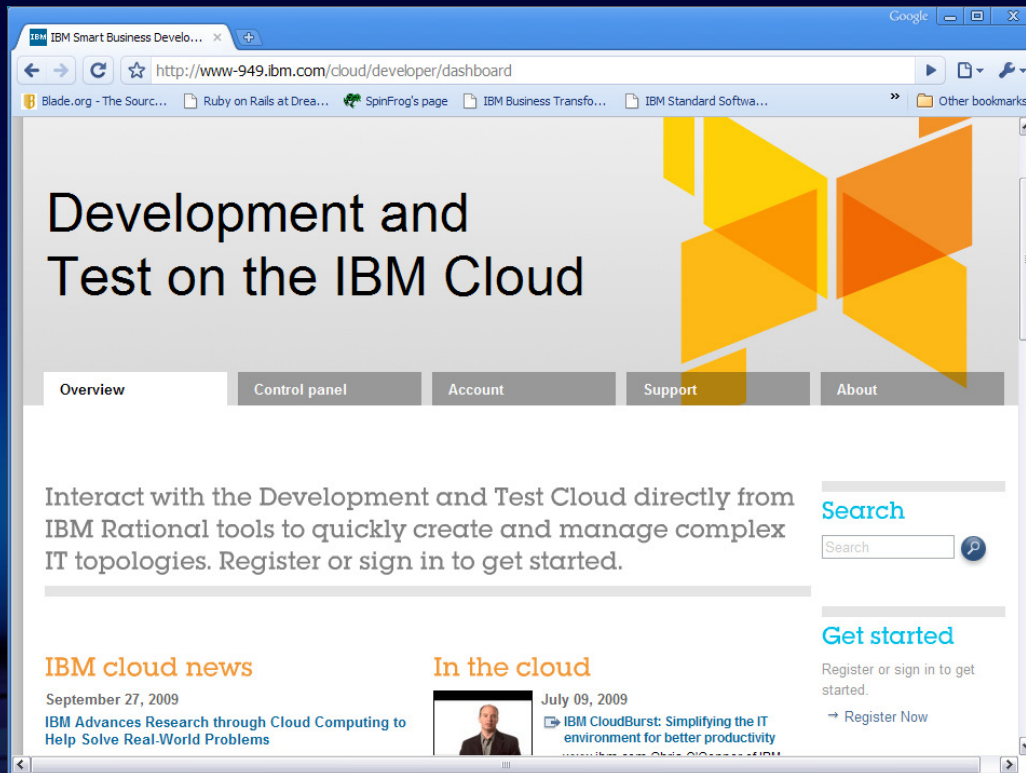
◀ **Private**
IT capabilities are provided “as a service,” over an intranet, within the enterprise and behind the firewall

Hybrid
Internal and external service delivery methods are integrated

Public ▶
IT activities / functions are provided “as a service,” over the Internet

Smart Business Development & Test on the IBM Cloud

IBM's Public Cloud

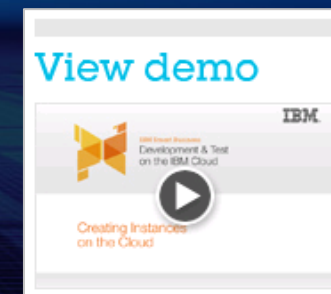


- GA on May 25 in US

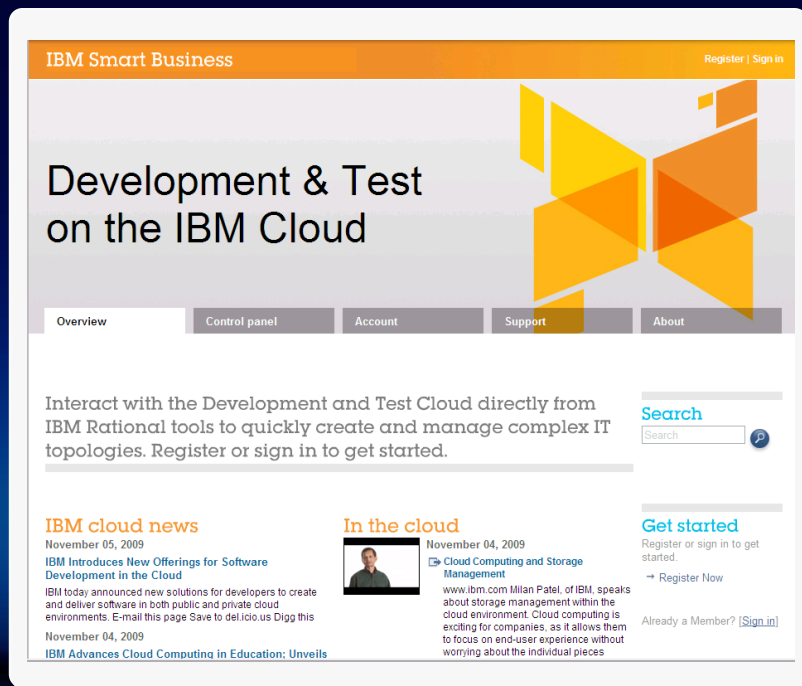
- Europe GA in 3Q

[Http://www.ibm.com/cloud](http://www.ibm.com/cloud)

<http://www.ibm.com/cloud/developer>



IBM Smart Business Development and Test on the IBM Cloud provides you with an enterprise-class cloud environment for SOA applications Development, Testing and Production



Our solution provides the following:

- Choice of seven virtual server configurations
- Choice of pre-configured software images
 - Linux® operating systems; Red Hat and Novell SUSE
 - IBM Lotus®, WebSphere®, DB2® and Informix® stacks
 - IBM Rational® Application Lifecycle Management software
- Option to add persistent storage (charged for per gigabyte [GB] per month)
- Support options including a Web-based forum for users to submit requests

Payment options:

- Pay-as-you-go option (per virtual machine hour usage charge)
- Reserved capacity package options
 - Reserve a pool of resources in units of 64 base processors for 6 or 12 months
 - Monthly fee plus discounted usage rates
- Network bandwidth charged for per GB transmitted. IP addresses per hour.

Deploy a Service with a few mouse clicks

Your Development environment ready in a only minutes...

Smart
SOA



Step 1 Click the Add Instances button and select an Image

IBM. Close [x]

Add Instance

Step 1 of 4: select image

- quality, and take greater contro... [more](#)
- Rational Quality Manager (5)
Rational Quality Manager provides a collaborative application lifecycle management (ALM) environment... [more](#)
- Rational Software Architect for WebSphere (10)
Rational Software Architect for WebSphere without the local WebSphere Test environment is an integra... [more](#)
- Rational Team Concert (6)**
Rational Team Concert is a collaborative software delivery environment that empowers project teams t... [more](#)
- SUSE 10 SP2 (3)
SuSE v10.2 Base OS Image
- WebSphere Application Server and Rational Agent Controller (15)
WebSphere Application Server and Rational Agent Controller enables a performance based foundation to... [more](#)
- WebSphere sMash with AppBuilder (22)
WebSphere sMash® provides a web platform that includes support for dynamic scripting in PHP and Groo... [more](#)

Next Cancel

Step 2 View Image details and customize to your needs

IBM. Close [x]

Add Instance

Step 2 of 4: configure image

You selected: Rational Team Concert
Rational Team Concert is a collaborative software delivery environment that empowers project teams to simplify, automate and govern software delivery.

Complete the following fields to configure your instance selection. Required fields are indicated with an asterisk (*).

Request Name:*

Quantity:*

Server Size:*

Expires on:*

RTC User Password:*
Customize the password for the RTC users

Previous Next Cancel

Step 3 Watch your Instances provision and start managing

IBM Smart Business Welcome Martin Levesque | Sign out

Development & Test on the IBM Cloud

Overview Control panel Account Support About

Recent Instances

Instance name	IP address	Status	
RTC_PROD_SVR		Provisioning	→ View Instance
RTC_MARTY		Provisioning	→ View Instance

→ Add Instances

Interact with the Development and Test Cloud directly from IBM Rational tools to quickly create and manage complex IT topologies. Register or sign in to get started.

Search
View asset catalog
Find detailed information on images and offerings
→ View asset catalog

<http://www.ibm.com/cloud/developer>

IBM Smart Business Develo... x

Google

https://www-949.ibm.com/cloud/developer/user/control.jsp

Blade.org - The Sourc... Ruby on Rails at Drea... SpinFrog's page IBM Business Transfo... IBM Standard Softwa...

Other bookmarks



Development and Test on the IBM Cloud

Overview Control panel Account Support About

Instances Images

View Asset Catalog →

Find instance by tag name:

  Add instance

Name	▲	Ip Address	Host Name	Created on	Running	Status
db2dima		129.33.194.45	vm035.developer.ihost.com	Oct 3, 2009	4 Days	Active
dima-rsa		129.33.194.195	vm128.developer.ihost.com	Oct 3, 2009	4 Days	Active

db2dima [Change name] Expires on 10/9/09 2 Days [Extend]

Reboot instance Delete instance Create image

Packages for the IBM Cloud

Option 1: Pay-as-you-go (VM/hour)

	32-bit Configuration			64-bit Configuration			
VM Component	Bronze	Silver	Gold	Bronze	Silver	Gold	Platinum
Virtual CPU @ 1.25GHz	1	2	4	2	4	8	16
Virtual Memory (GB)	2	4	4	4	8	16	16
Instance Storage (GB)	175	350	350	850	1024	1024	2048

Option 2: Reservation Bundles (OTC + Discounted VM/hour)

	6 month	12 month
Small (64 CPUs)		
Medium (512 CPUs)		
Large (1,920 CPUs)		

Development and Test Software Image Catalog

All your SOA Middleware and Tools

Middleware Software

Information Management

- DB2 Enterprise
- DB2 Express-C V9.7
- Informix Dynamic Server Developer Edition V11.5

WebSphere. software

- WebSphere Application Server V7
- WebSphere sMash V1.1

Lotus. software

- IBM Mashup Center v2.0
- WebSphere Portal Server and Lotus Web Content Management Standard Edition V6.1.5
- Lotus Domino V8.5.1

Integration made easy with IBM Cast Iron.....SOA or not!



Complete Flexibility



Cast Iron Cloud2™



Physical Appliances



Virtual Appliances

Total Connectivity



Complete Reusability



TIP Exchange



TIP Development Kit

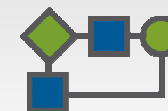


TIP Community

For All Types of Projects



UI Mashups



Process Integration



Data Migration

An ecosystem of IBM Business Partners support Smart SOA and the IBM Cloud

CloudTest
by SOASTA

WaveMaker

VMLogix

RIGHT SCALE
Cloud Computing. Delivered.



Novell

PayPal



IT Infrastructure Health for SOA and Cloud

How to evaluate where you are?

Infrastructure Flexibility

Is your IT Infrastructure ready for SOA? How easily can I deploy Cloud Computing? Is my business able to take advantage of Cloud and SOA to the fullest extent?

Middleware

Do you have the right middleware technology to meet enterprise wide business requirements?

Service Management & Cloud

Is the strategy clear? Do you know where to start?



Common infrastructure symptoms

Infrastructure Flexibility

- *Performance issues with demand peaks?*
- *Problems in tuning the system?*
- *Issues seem to pop up whenever changes are made to the systems?*

Middleware

- *Concerns about the scalability?*
- *Inconsistent communications plague the system?*
- *Asked to guarantee connectivity without knowing if that is possible?*

Service Management

- *System Performance is managed smoothly and efficiently?*
- *Changes are handled effectively and impacts to the system are known ahead of the change being deployed?*
- *Infrastructure is resilient and maintains high availability?*



IBM Healthchecks for SOA & Cloud Strategy Workshops

GBS



GBS



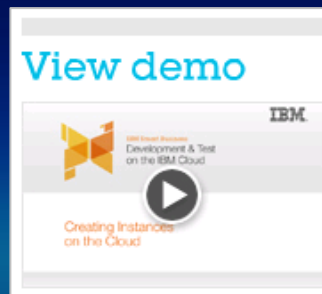
GTS



GTS



Video Demo



How we will differentiate IBM Cloud Computing

Clear economic value

IBM provides clear economic value and helps you work through the right mix of delivery models and choices (by workload) to reap the maximum benefit.

Integrated and open

IBM supports industry standards, has over 8 million developers, and provides a platform for open innovation.

Secure and ready for business

IBM provides Cloud solutions that are completely robust and secure, based on the demanding needs of today's businesses: rapid provisioning, clear visibility of assets, robust data governance, and seamless mix of delivery models.

Designing for simplicity

From sourcing to usage to maintenance, IBM Cloud solutions are designed to be simple, intuitive, and built based on how people actually work.

Globally relevant

IBM has partners, delivery centers, and a world-wide network of partners in 174 countries. And we have the experience of running a globally integrated enterprise, so we understand what it takes to make a global company run.

Thank You



wfalk@us.ibm.com

© IBM Corporation 2010. All Rights Reserved.

The workshops, sessions and materials have been prepared by IBM or the session speakers and reflect their own views. They are provided for informational purposes only, and are neither intended to, nor shall have the effect of being, legal or other guidance or advice to any participant. While efforts were made to verify the completeness and accuracy of the information contained in this presentation, it is provided

AS IS without warranty of any kind, express or implied. IBM shall not be responsible for any damages arising out of the use of, or otherwise related to, this presentation or any other materials. Nothing contained in this presentation is intended to, nor shall have the effect of, creating any warranties or representations from IBM or its suppliers or licensors, or altering the terms and conditions of the applicable license agreement governing the use of IBM software.

References in this presentation to IBM products, programs, or services do not imply that they will be available in all countries in which IBM operates. Product release dates and/or capabilities referenced in this presentation may change at any time at IBM's sole discretion based on market opportunities or other factors, and are not intended to be a commitment to future product or feature availability in any way. Nothing contained in these materials is intended to, nor shall have the effect of, stating or implying that any activities undertaken by you will result in any specific sales, revenue growth or other results.

Performance is based on measurements and projections using standard IBM benchmarks in a controlled environment. The actual throughput or performance that any user will experience will vary depending upon many factors, including considerations such as the amount of multiprogramming in the user's job stream, the I/O configuration, the storage configuration, and the workload processed. Therefore, no assurance can be given that an individual user will achieve results similar to those stated here.

All customer examples described are presented as illustrations of how those customers have used IBM products and the results they may have achieved. Actual environmental costs and performance characteristics may vary by customer.

The following are trademarks of the International Business Machines Corporation in the United States and/or other countries. For a complete list of IBM trademarks, see www.ibm.com/legal/copytrade.shtml

AIX, CICS, CICSplex, DB2, DB2 Universal Database, i5/OS, IBM, the IBM logo, IMS, iSeries, Lotus, MQSeries, OMEGAMON, OS/390, Parallel Sysplex, pureXML, Rational, RACF, Redbooks, Sametime, Smart SOA, System i, System i5, System z, Tivoli, WebSphere, zSeries, and z/OS.

Java and all Java-based trademarks are trademarks of Sun Microsystems, Inc. in the United States, other countries, or both.

Microsoft and Windows are trademarks of Microsoft Corporation in the United States, other countries, or both.

Intel and Pentium are trademarks or registered trademarks of Intel Corporation or its subsidiaries in the United States and other countries.

UNIX is a registered trademark of The Open Group in the United States and other countries.

Linux is a registered trademark of Linus Torvalds in the United States, other countries, or both.

Other company, product, or service names may be trademarks or service marks of others.